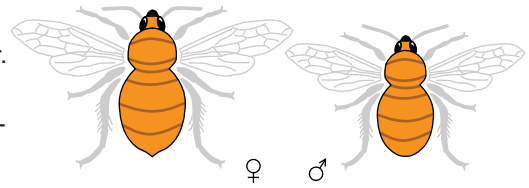


# The BIG 6 most common British BUMBLEBEES

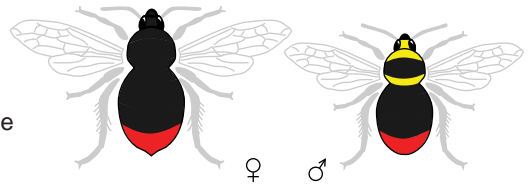
## *Bombus pascuorum* Common Carder Bee

Gingery-brown colour all over; long-tongued; males and workers similar. Nests on the ground's surface. Commonly seen on flowers late in the year, even in November. Found in gardens, farmland, woodland, healthland. Colonies are small, and generally mild-tempered if disturbed.



## *Bombus lapidarius* Red Tailed Bumblebee

Very common on chalk downland. Also prevalent in gardens. A short-tongued bee. Usually nests under the surface of the ground; colonies often large. Distinguished from the much rarer Red Shanked Carder Bee by presence of black hairs on hind legs.



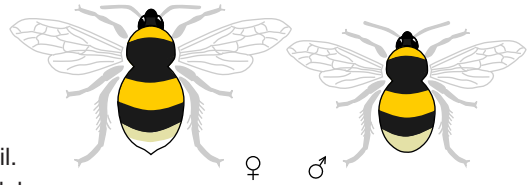
## *Bombus pratorum* Early Bumblebee

A small bee. Face longer than it is wide. Females sometimes lack the yellow band on the abdomen. Found in gardens, farmland, woodland glades and edges. Nests usually below the ground. Colonies are short-lived, with males appearing as early as April. Rarely seen in late Summer.



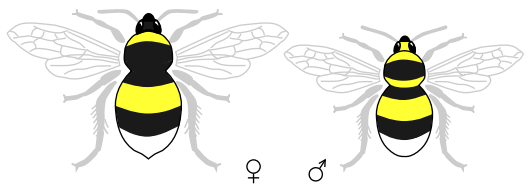
## *Bombus terrestris* Buff Tailed Bumblebee

Found in gardens, farmland, woodland, grassland, heathland. Queens are large, commonly seen in early Spring. Nests below ground; large colonies; can be aggressive if disturbed. Workers have large white tail, usually with a hint of buff close to the black band. Males have all-buff tail. Wide-faced. Yellow bands slightly darker than in the White Tailed Bumblebee.



## *Bombus lucorum* White Tailed Bumblebee

A common, short-tongued bee, often nesting under garden sheds. Found in gardens, farmland, woodland, grassland, heathland, uplands, marshes, bogs. Distinguished from the similar Buff Tailed Bumblebee by pure white tails and lemon yellow bands. Face wider than it is long.



## *Bombus hortorum* Garden Bumblebee

Very long-tongued species preferring flowers like foxgloves. Found in gardens, farmland, woodland, heathland. Nests below ground. Less common in late Summer. Distinguished from smaller Heath Bumblebee by its much-longer face. Males and workers similar.

